

# MODULE 12 L02

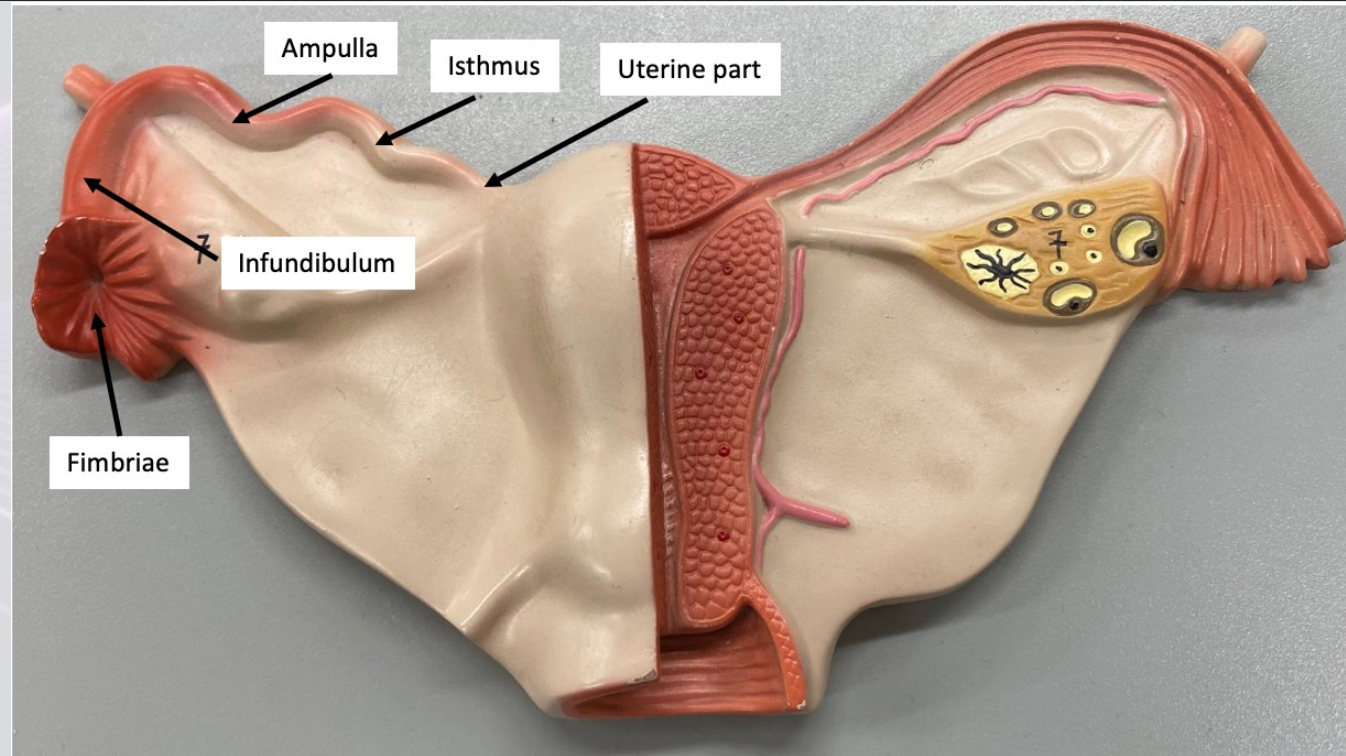
## Female Reproductive System: Uterus

Dr. Lisa Brinn  
[lbrinn@fiu.edu](mailto:lbrinn@fiu.edu)



# Uterine Tubes

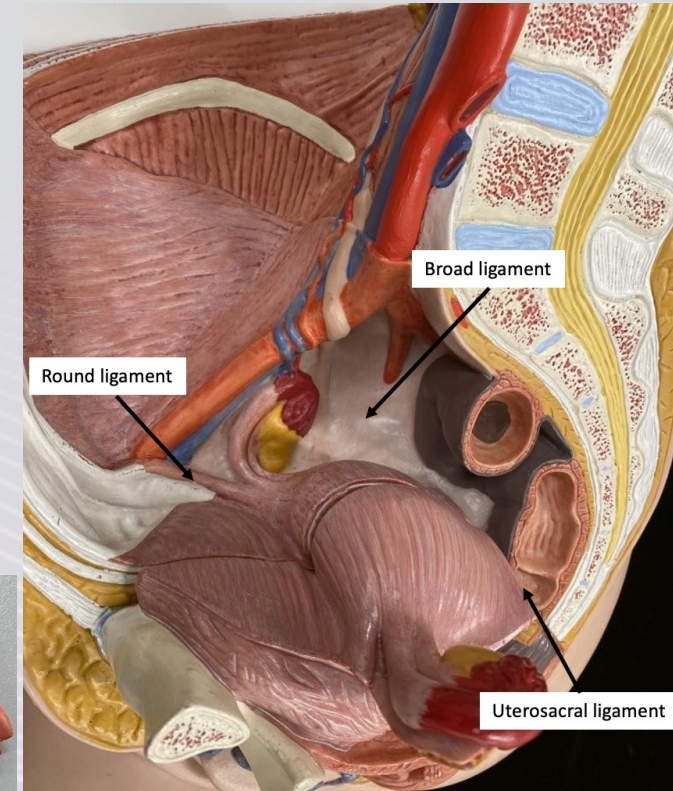
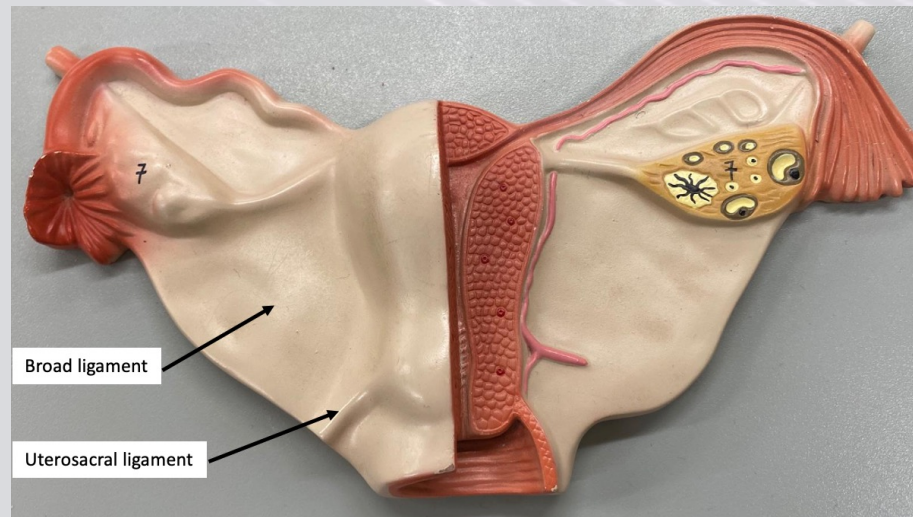
- Also known as Fallopian tubes
- Regions:
  1. Fimbriae
  2. Infundibulum
  3. Ampulla
  4. Isthmus
  5. Uterine part





# Uterus

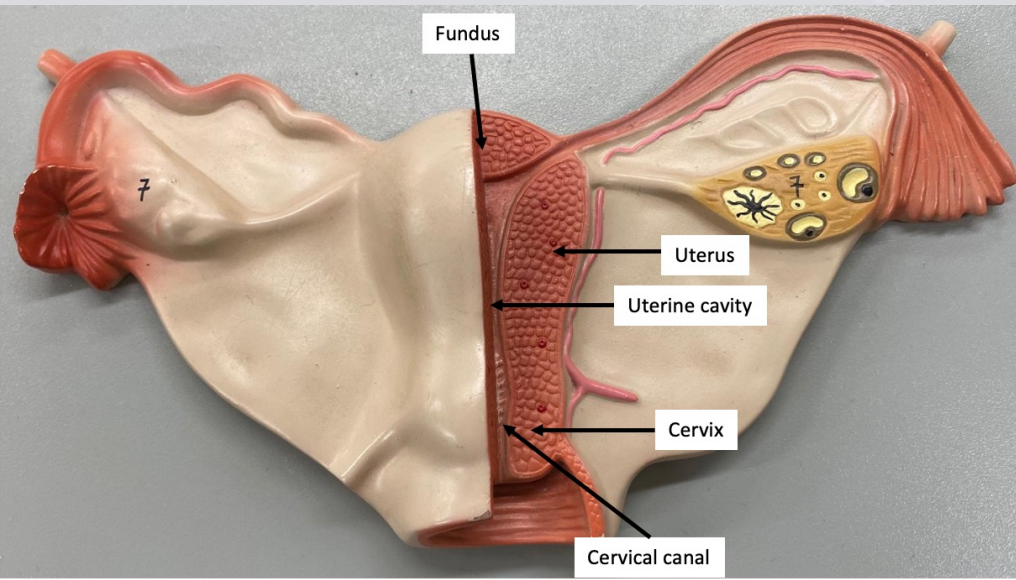
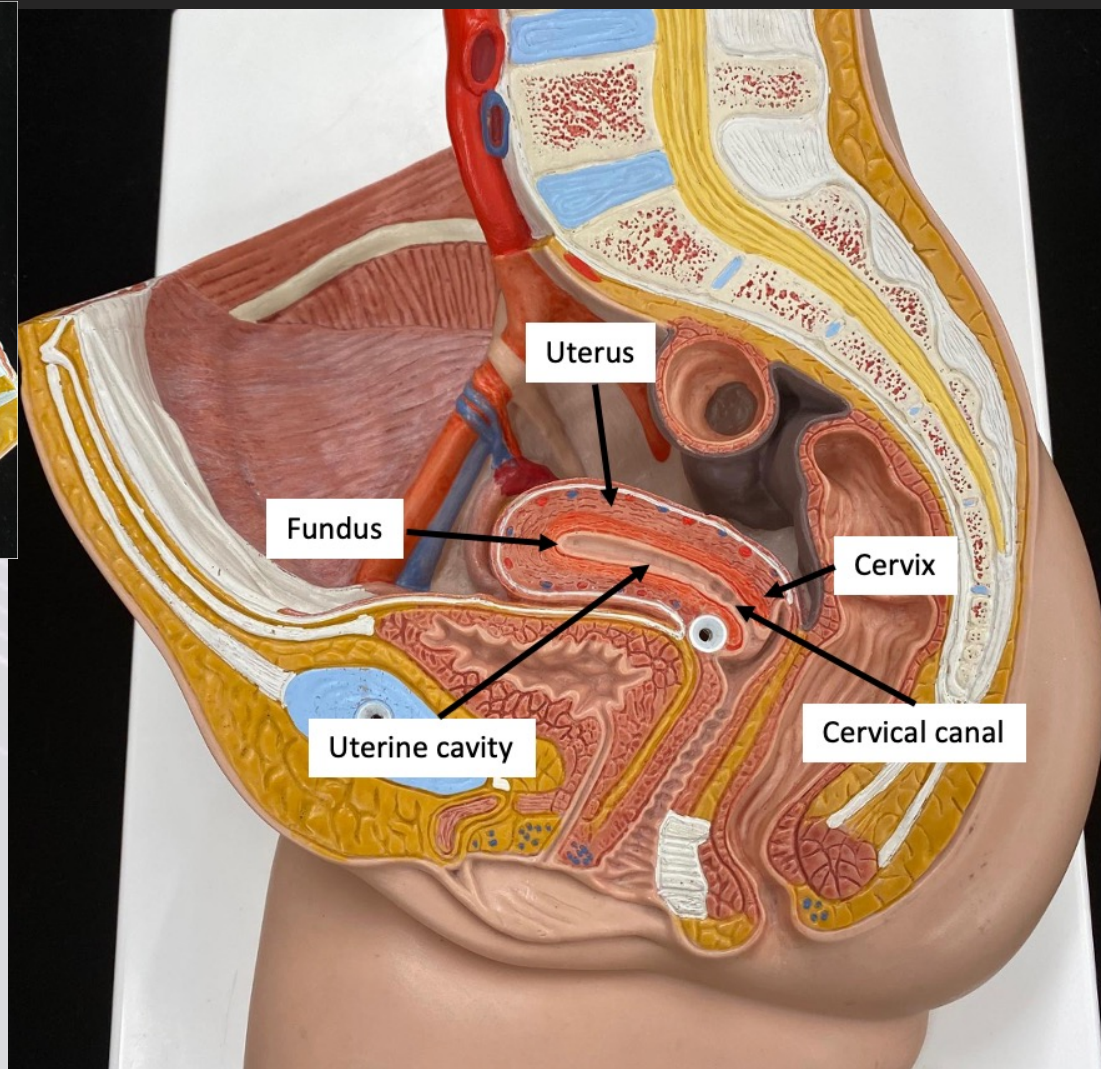
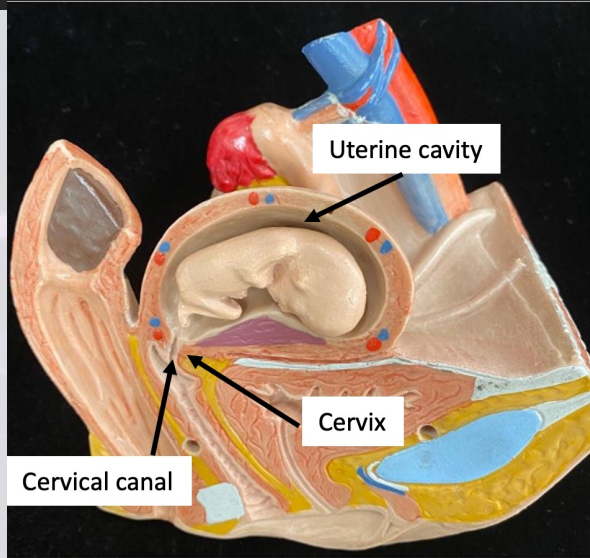
- Functions:
  - ❖ Physical protection
  - ❖ Nutritional support
  - ❖ Waste removal
- Ligaments
  - ❖ Broad ligament
  - ❖ Uterosacral ligament
  - ❖ Round ligament





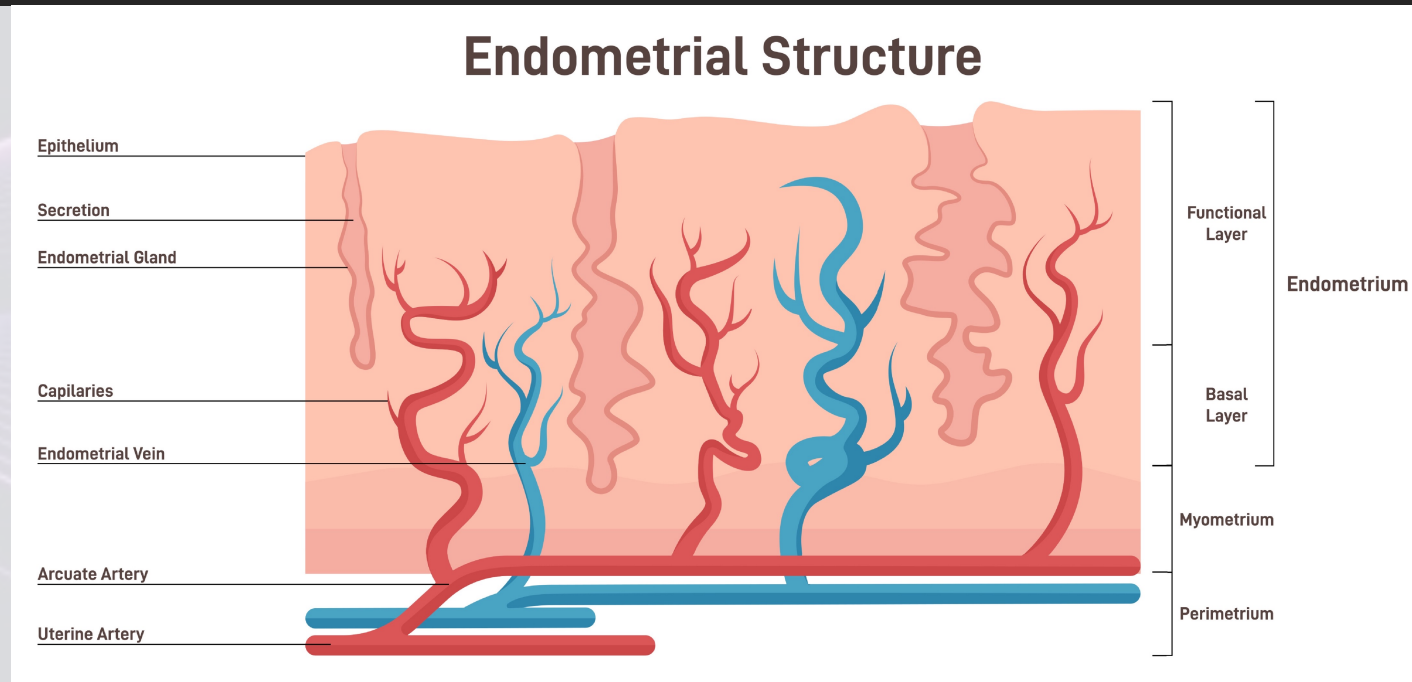
# Gross Anatomy of Uterus

- Uterus
  - ❖ Fundus
  - ❖ Uterine cavity
  - ❖ Cervix
    - Cervical canal



# Uterine Wall

- Endometrium
  - ❖ Inner layer
  - ❖ Subdivided:
    - Functional layer
    - Basal layer
- Myometrium
  - ❖ Outer layer
  - ❖ Thickest portion of uterine wall
- Perimetrium
  - ❖ Serous layer
    - Secretes lubricating fluid





# Uterine Cycle

1. Menstrual phase
  - ❖ Degeneration of functional layer
2. Proliferative phase
  - ❖ Restauration of uterine epithelium
3. Secretory phase
  - ❖ Begins after ovulation
  - ❖ Lasts until corpus luteum stays intact

